

WELCOME TO



100% EXPORT ORIENTED READYMADE GARMENTS INDUSTRY

Message from the Managing Director

It gives me immense pleasure to introduce Blueaglez Bangladesh Limited as one of the new entrant in RMG sector. Blueaglez Bangladesh Limited is a part of Kazi Kabir Group who are mainly engaged in Steel Business. To step in to RMG we have started with a small but modern and efficient 100% export oriented knit garments production factory. Our existing floor have 8 production line in Uttara, Dhakkin khan and new project have 14 production line in Ashulia. We manufacture wide range of products for knit segment by adopting most modern and dynamic technology. We are committed to fulfill the quality, time frame and reliability that you need and at the same time we are working for the extensions to increase our capacity in terms of space, machines and workers.

We strongly believe, we can serve you with highest level of satisfaction with most experienced working team members. On behalf of Blueaglez Bangladesh Limited, I welcome you to visit our office and factory to understand us better and to experience the quality of the products we are making.

*Kazi Rejaul Kabir
Managing Director
Blueaglez Bangladesh Limited*

CONTACT

CORPORATE OFFICE:

Police Plaza Concord, Unit - 9/L, Plot - 2, Road-144, Gulshan-1 C/A, Dhaka, Bangladesh.

FACTORY:

121/1 1 KA Durgapur, Munshipara, Zirabo, Ashulia, Savar, Dhaka-1341.

CONTACT:

Call us @ +880-966777554, +8801671711448, +8801671711448

info@blueaglezbangladesh.com

www.blueaglezbangladesh.com

ABOUT US

The Industry is a 100% Export oriented readymade garments industry for both Knit & Woven, located at Dakkhinkhan, Uttara, Dhaka-1230 and **Durgapur, Munshipara, Zirabo, Ashulia, Savar, Dhaka-1341.**

It consists Cutting, Sewing, Finishing and office with most Modern machinery in the same floor Premises.

Status	: Private Ltd. Company
Year of established	: 2016
Floor Area	: 42000 Sft.

Key Persons:

1. Chairman	: Kazi Raisuddin
2. Managing Director	: Kazi Rejaul Kabir
3. Executive Director	: Humayon Rashid Talukder

ABOUT US

SOCIAL TERMS

We maintain all social charter requirements of Bangladesh labor law and maintains a satisfactory condition as per evaluation of Bangladesh Garment Manufacturers & Exporters Association (BGMEA).

SOCIAL TERMS

1. No child labor or forced labor
2. No gender discrimination
3. Freedom of association & collective bargaining
4. Ensuring health care and maternity leave
5. Ensuring fire safety and child care facility
6. Working environment under hygienic condition.
7. Quality assurance
8. Reasonable price
9. On time delivery

PRODUCTION

Production Line	: 8 Lines in Dhakkin Khan Uttara and 14 Lines in ASHULIA. We are expect to start Production from the Date of December.
Number of Machines	: 460 Sets.
Products	: T-Shirt, Tank Top, Polo Shirt, Shorts, Denim, Twill Pant, Cargo Pant, Leggings, Tops, Inner Wear, Polar Fleece etc.
Number of Workers & Staffs	: 700 Persons.
Production Capacity	: 6,50,000 Pcs/Month T-Shirt - 30,000 Pcs Per Day Polo-Shirt – 25,000 Pcs Per Day Inner Wear – 45,000 Pcs Per Day Ladies Tops (Woven) – 22,000 Pcs Per Day Leggings – 35,000 Pcs Per Day
Lead time	: 60 to 90 days upon confirmation of orders with all other details.

BANK

BASIC BANK LIMITED

AC: 0610-01-0007814

BANGSHAL BRANCH

230 North South Road

Bangshal, Dhaka-1100

Tel: 02-9563686, 9562615

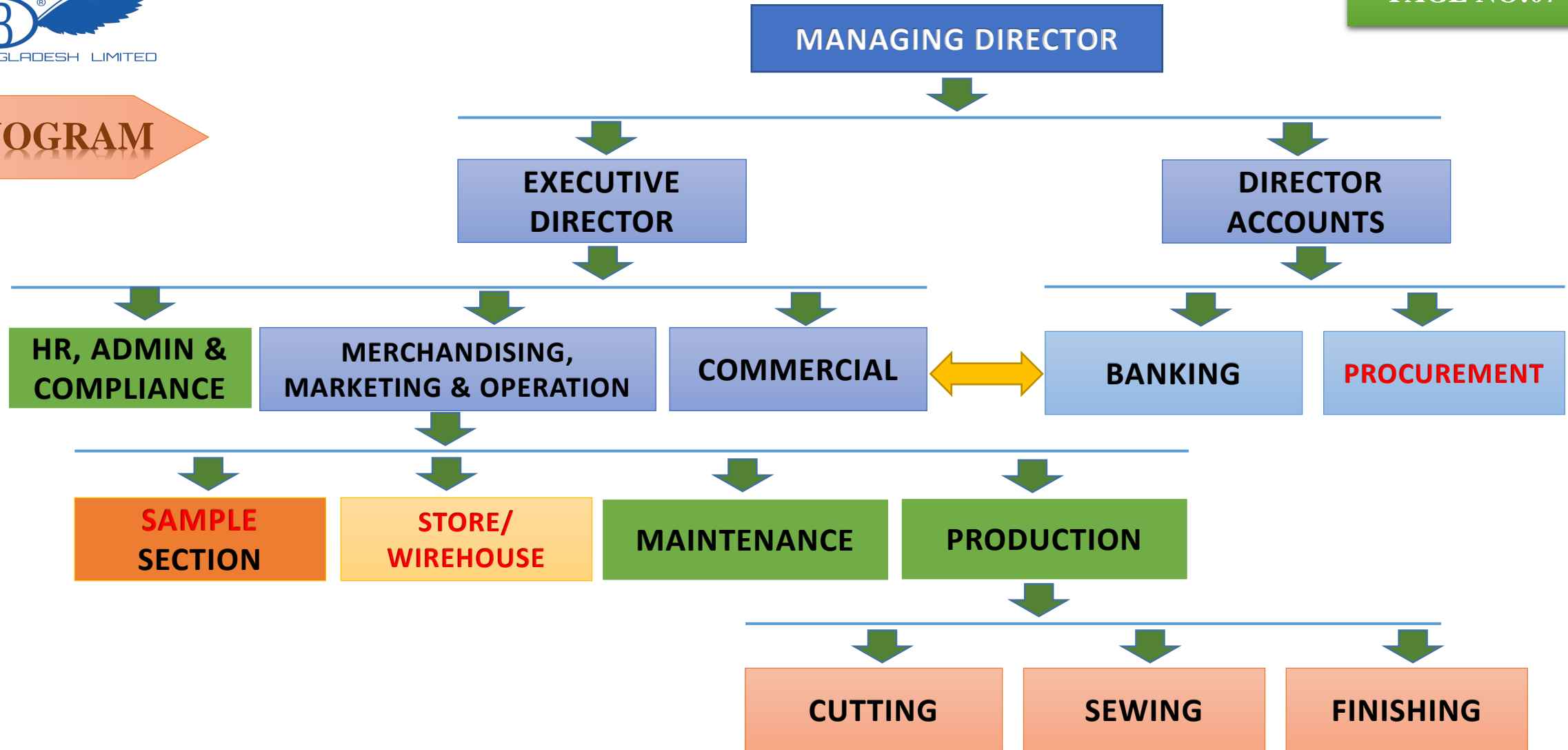
Fax: 02-9557141

SWIFT: BKSIBDDH006

Branch Code: 06

E-mail: bangshal@basicbanklimited.com

ORGANOGRAM



OUR VALUABLE CLIENTS

=YAGI=



NEWYORKER

**DECKS PTE. PVT. LTD.
SINGAPORE**

**N.L.G
RUSSIA**

**CARRY S.P. Z O. O
POLAND**

**TOKO SHOJI
JAPAN**

**VISCA SAFETY
CHILE**

**WILDCRAFT
INDIA**

**LIPPI
CHILE**

NEW COUSTOMER

**FILSON
USA**

**BENCH
UK**

**BOYS GROUP
CANADA**

**CONCEPT CLUB
RUSSIA**

**INCITY
RUSSIA**

PROJEK RAW  **Canada**

SEDEX – UNDER PROCESS

PRODUCTION PROCESS

**BONDED WARE
HOUSE**

**FABRIC AND
ACCESSORIES**

**SAMPLE WITH CAD
GERBER SOFWEAR**

CUTTING

**PRINT EMBROIDERY
(IF NECESSARY)**

SEWING

INSPECTION

IRON

FINAL INSPECTION

**GET UP
INSPECTION**

MEASUREMENTS

**HANG TAG
ATTACHMENT**

**NEEDLE
INSPECTION**

**DUST FREE FOLDING ROOM
WHICH IS PROTECTED BY
GLASS.**

POLY

CARTON

SAFETY & FACILITIES

FIRE DOOR

**FIRE FIGHTING
EQUIPMENTS**

**WATER RESERVER
FOR FIRE FIGHTING**

FIRST AID

**FIRE
EXTINGUISHER**

**EMERGENCY
TELEPHONE NO**

EMERGENCY LIGHT

PRAYER PLACE

CHILD CARE ROOM

MEDICAL FACILITY

**LOADING/
UNLOADING**

SECURITY SYSTEM

SOME OF POLICIES

**CHILD LABOR
POLICY**

**RECRUITMENT
POLICY**

**FORCED LABOR
POLICY**

**COERCION AND
HARASSMENT POLICY**

**DISCRIMINATION
POLICY**

**HEALTH & SAFETY
POLICY**

**FREEDOM &
ASSOCIATION POLICY**

**WORKING HOUR
POLICY**

**WAGES & BENEFIT
POLICY**

**ENVIRONMENTAL
POLICY**

**DOCUMENTATION &
COMMUNICATION POLICY**

WASTE POLICY

UTILITY

MAIN POWER :

315KVA, 11KV REB Connection

STAND BY POWER :

315 KVA DIESEL GENERATOR

BOILER :

500 KG GAS BOILER

DISTRIBUTION LINE :

BUSBAR TRANKING SYSTEM (BBT)

MACHINE LIST

CUTTING SECTION

CUTTING TABLE	02 NOS.
---------------	---------

STRAIGHT KNIF	03 NOS.
---------------	---------

FINISHING SECTION

IRON TABLE	14 NOS.
------------	---------

NEDDLE DETECTOR	01 NOS.
-----------------	---------

FULL DUST FREE FOLDING AREA	
-----------------------------	--

UTILITY SECTION

SUB-STATION	01 NOS.
-------------	---------

GENERATOR	01 NOS.
-----------	---------

BOILER	01 NOS.
--------	---------

COMPRESSOR	01 NOS.
------------	---------

SAMPLE SECTION

SEWING MACHINE	20 NOS.
----------------	---------

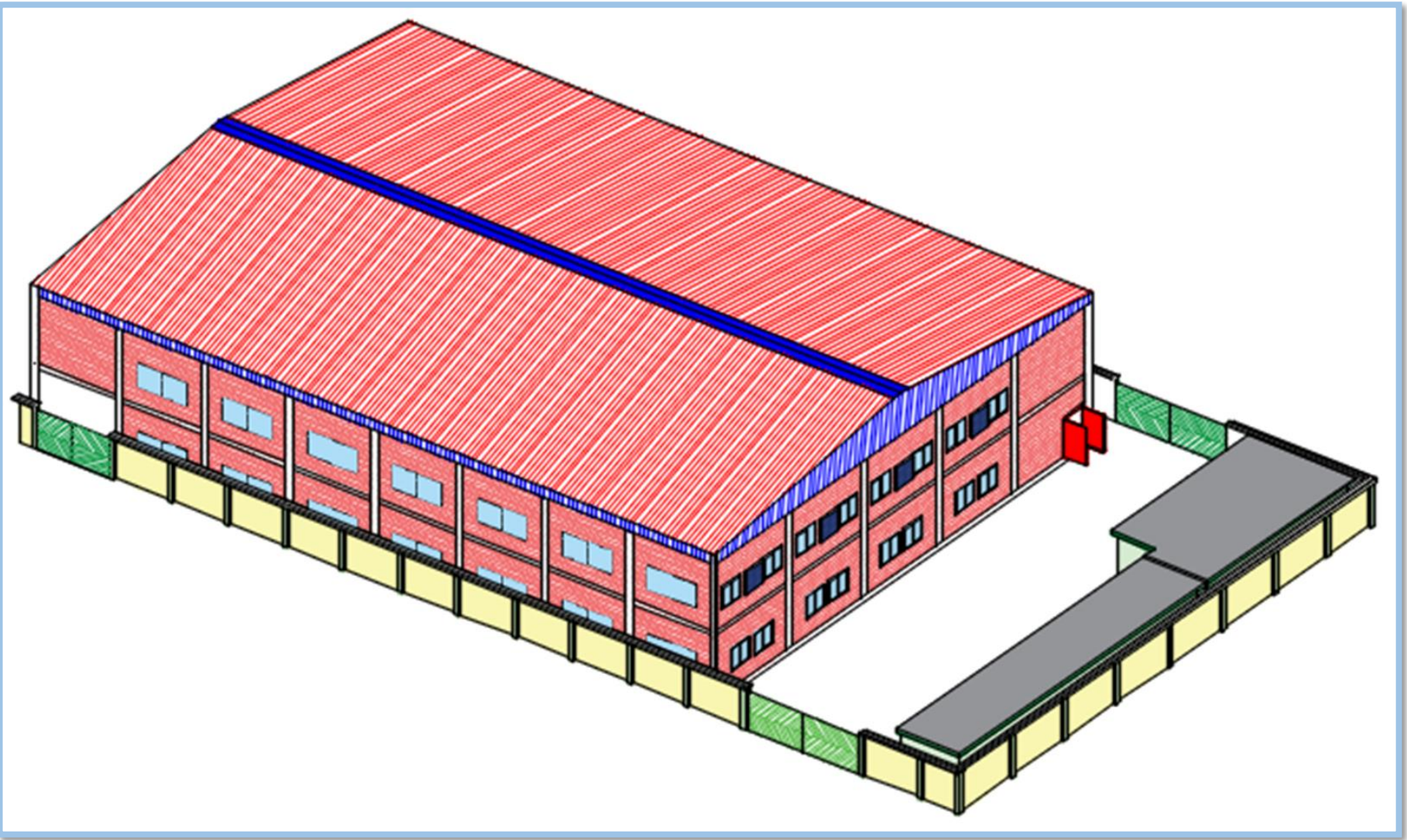
SEWING SECTION

SEWING MACHINE	438 NOS.
----------------	----------

ELASTIC JOINT	01 NOS.
---------------	---------

RE-CONE	01 NOS.
---------	---------

3D VIEW OF FACTORY

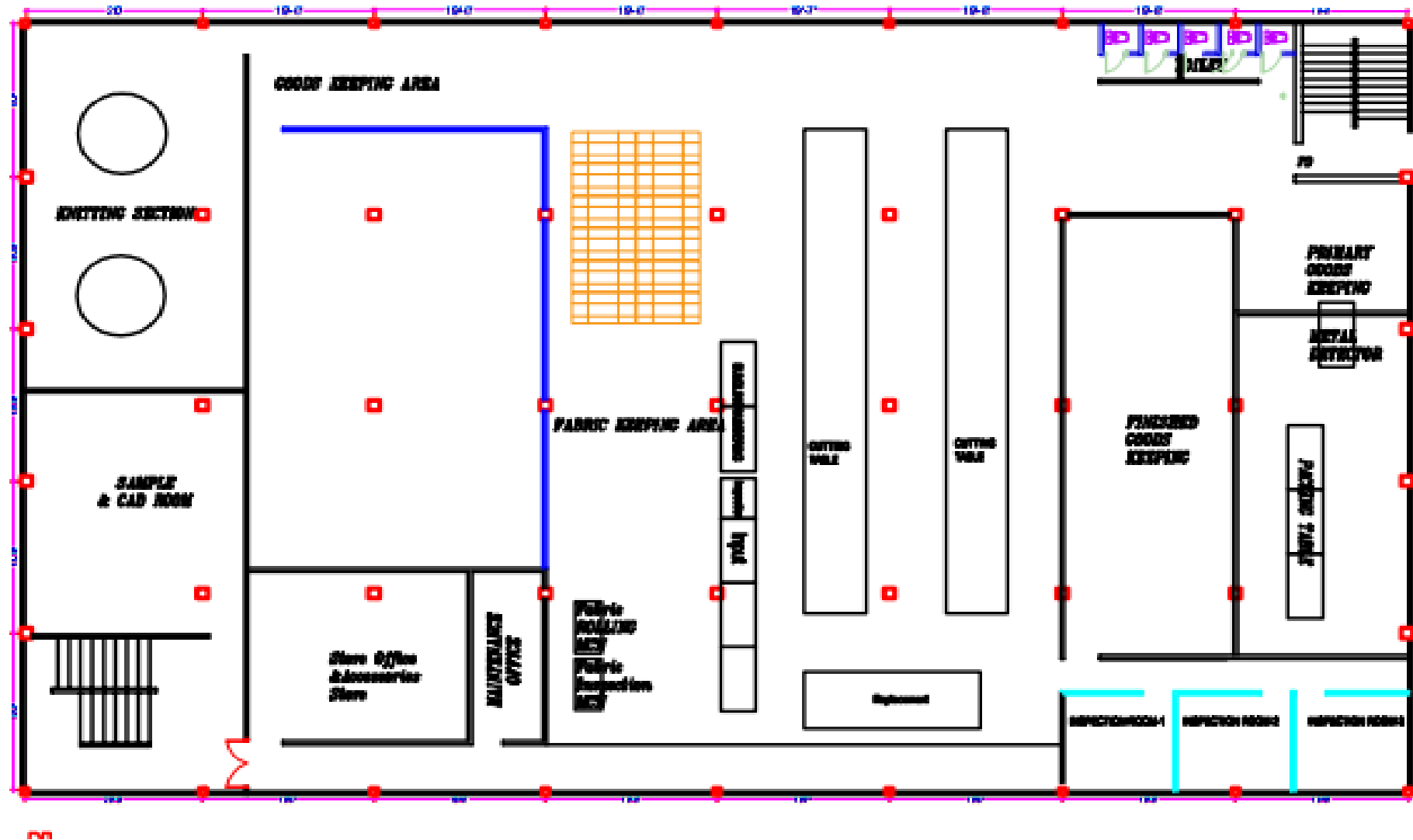


FLOOR PLAN - FIRST FLOOR

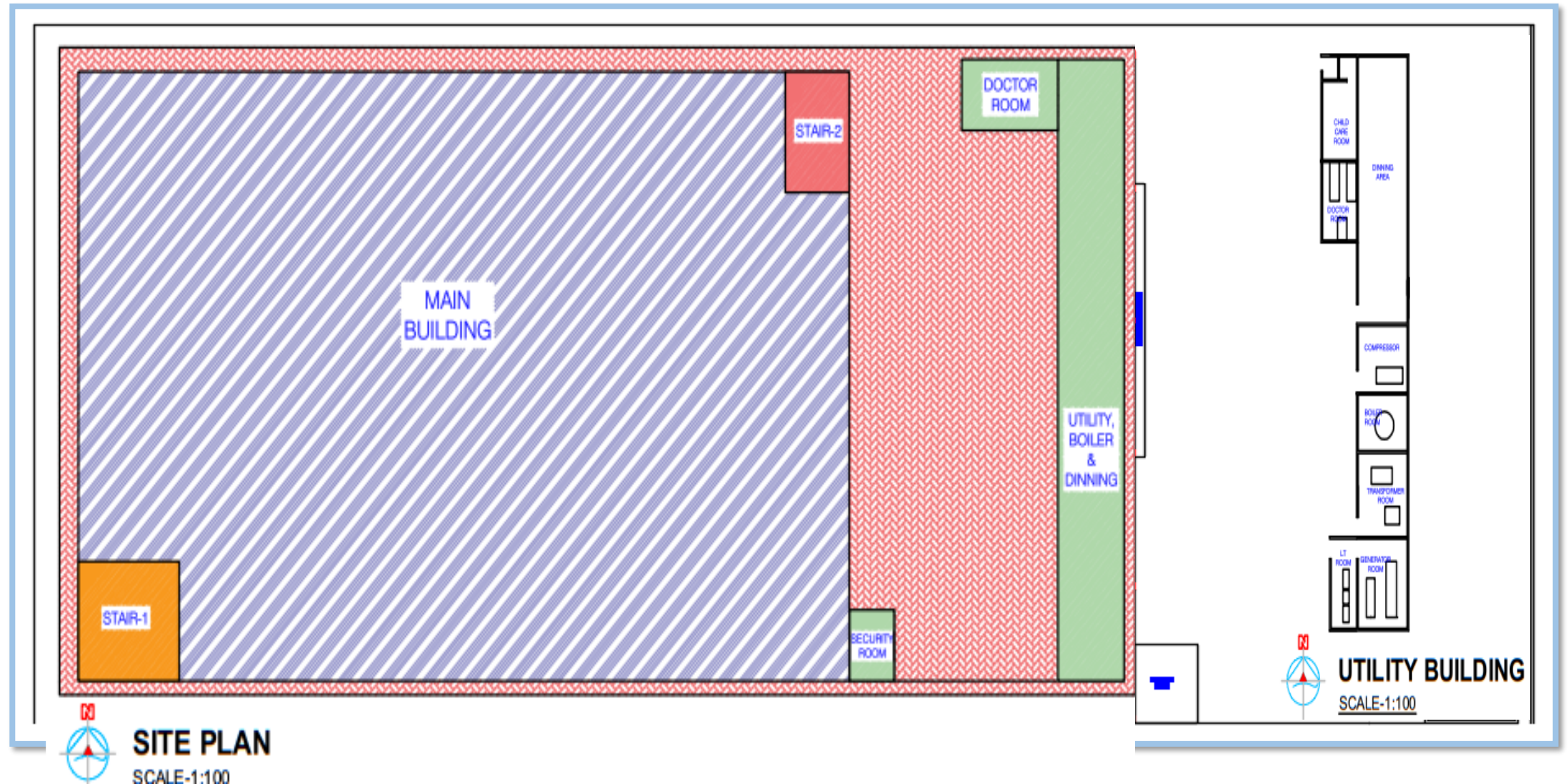


1ST FLOOR PLAN
SCALE-1:100

FLOOR PLAN - GROUND FLOOR



FLOOR PLAN - UTILITY



Men's T- Shirt



Men's T- Shirt



Men's T- Shirt



Men's T- Shirt



Men's T- Shirt



Men's Polo



Men's Polo



Jacket



Ladies Top



Ladies Top



Hoodie



Hoodie



Short Pant





BLUEAGLEZ BANGLADESH LIMITED

THANK YOU